



# CatMobile Setup

---

Version 4: introduced the package instructions for Fedora and Ubuntu.

Rev 5. Added SSL information

2014/09/23 05:01:00 PM

MNBrecher

# Contents<sup>1</sup>

1	Requirements .....	2
a.	Operating System and Corresponding CathexisVision Software .....	2
2	Setup .....	3
a.	Networking .....	3
	HTTPS Access .....	3
b.	Enabling on Windows, and Linux Units .....	4
	Linux Packages .....	4
	CathexisVision Interface Settings .....	4
c.	On NetBSD Units .....	5
d.	On Browser .....	5
	Firefox .....	5
	Internet Explorer .....	5
	Chrome .....	5
e.	On Phone .....	5

---

<sup>1</sup> While Cathexis has made every effort to ensure the accuracy of this document, there is no guarantee of accuracy, neither explicit, nor implied. Specifications are subject to change without notice.

# 1 Requirements

## a. Operating System and Corresponding CathexisVision Software

This is a list of the different operating systems that CathexisVision runs on, along with the corresponding software versions, and updates, needed to have Mobile access to CathexisVision.

### NetBSD 4.0 DSS

5041h software: Apply *remote\_upgrade.tgz.html5\_5041h\_2.001\_RC17.40*

5042d software: Apply *remote\_upgrade.tgz.html5\_5042d\_2.001\_RC17.40*

5043a software: Apply *remote\_upgrade.html5.40* **and** Enable "CatMobile Access" in the General setup.

### Windows NVR

5042d software: Extract *html5\_5042d\_2.001\_RC17\_win32.zip* in the NVR installation directory.

5043a, and later, software: Enable "CatMobile Access" in the General setup.

### Linux NVR

5043a, and later, software: Enable "CatMobile Access" in the General setup.

### Supported Desktop browsers:

Minimum requirements are HTML5 with WebM video streaming support. Navigating to the CatMobile web app will indicate your level of browser support.

- Firefox 4, or later
- Internet Explorer 9, or later (with WebM installed)
- Chrome, Minimum version 8.0

### Supported mobile devices:

- iOS 5, or later
- Android 2.3, or later, with OpenGL ES 2.0 support.

### TCP Ports Used:

HTTP:80 (TCP)

## 2 Setup

### a. Networking

To access individual servers from outside of the LAN on which they are situated you need to make some network changes. Specifically you will have to setup Port Forwarding on your external router, which will route connections to specific servers.

This is because any network access outside of the LAN will come through an external router, which connects to the internet via a single IP address (which is either static or dynamic). To redirect the incoming connections to the correct unit we have to associate specific ports with specific units.<sup>2</sup>

By default all HTTP connections go via port 80, so when you type an IP address into your HTTP browser you will either be directed to the router through which that network accesses the internet, or the main HTTP server on that network.

*As an example scenario:*

You have forwarded port 8181 to a unit with the IP address 100.100.100.100, a public IP address of 200.200.200.200, and you have an HTTP server setup on that unit. Type the public IP into your browser, followed by :8181 [e.g. 200.200.200.200:8181] the router will pass your connection straight through to the HTTP server on unit 100.100.100.100.

**Note:** For information on setting up Port Forwarding look to [www.portforward.com](http://www.portforward.com)

### HTTPS Access

Here are the steps necessary to enable HTTPS access to the CatMobile.

**Note:** this only works on Windows machines

- **Create /keys directory, in the CathexisVision installation path**

Put your .cert and .key files in this folder

- **In the install path, edit the `apache\conf\http.conf` file**

1. Search for "listen"
  - a. Change the, from 80, to 443.
1. Search for "ssl\_module modules/mod\_ssl.so"
  - b. Uncomment the line that says "LoadModule ssl\_module modules/mod\_ssl.so"
1. Search out "ProxyPassReverse", and add the following below it:
  - c. ServerName [www.example.com](http://www.example.com)  
SSLEngine on  
SSLCertificateFile keys/mycert.cert  
SSLCertificateKeyFile keys/mycert.key

**Note:** "mycert" and [www.example.com](http://www.example.com), above, must be replaced with your own names.

---

<sup>2</sup> Think of it like postal addresses. A block of flats represents a LAN, and the external IP address of this LAN is the street address of the block of flats. By setting up Port Forwarding we add the address of individual units to the address.

## b. Enabling on Windows, and Linux Units

Mobile access requires access to individual cameras. This means that you need to enable access on a server, by server, basis. To do so follow these instructions:

### Linux Packages

There are some packages which need installation, in order to get the mobile connection working, on Linux.

**Note:** An internet connection is needed to install these packages.

- **Fedora**

The packages needed are:

1. httpd
2. php
3. php-pecl-apc

Enter the command line of your unit, and as a superuser, type the following command:

```
yum install httpd php php-pecl-apc
```

- **Ubuntu**

**Note:** This is only supported from CathexisVision2014.3\_RC7 (5043b3\_RC7) or later.

Packages needed to use CatMobile connections:

1. php5
2. apache2
3. libapache2-mod-php5

Before installing the CathexisVision software run the following command.

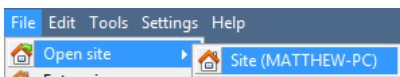
**Note:** If the CathexisVision software is already installed, you will need to rerun the installation package. Do **not** uninstall, and reinstall.

```
sudo apt-get install php5 apache2 libapache2-mod-php5
```

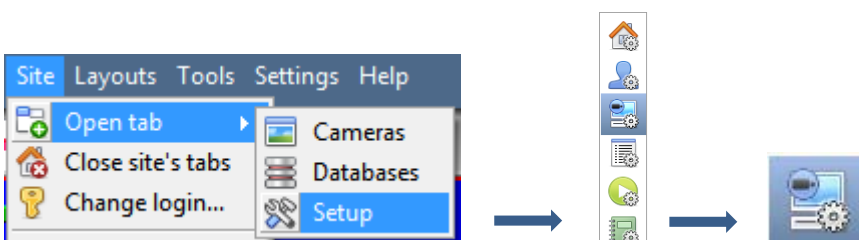
### CathexisVision Interface Settings

These will be the same, across distributions.

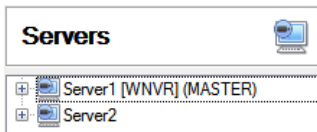
- **Click on File —> Open Site —> siteName**



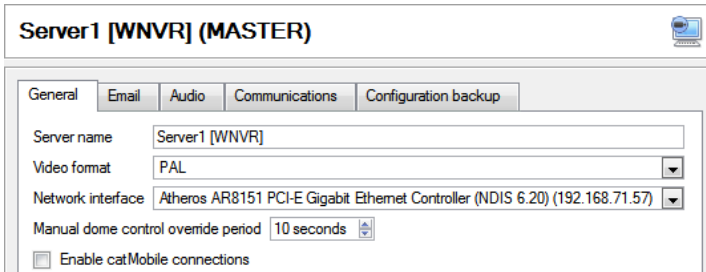
- **Site —> Open Tab —> Setup —> Configure Servers**



- **Select Individual Servers from the Servers Panel**



As you can see there are two servers on this site [Server1, and Server2]. You have to select each one and configure it to allow remote Mobile connections.

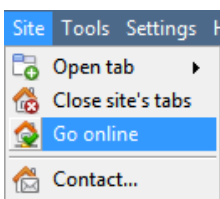


Once you have selected your server the options for this particular server will appear in the panel to the right, headed with the server's name.

Under General check the box titled  Enable catMobile connections and click



Enable catMobile connections



**Note:** This will close the software and restart the CathexisVision servers running on the unit. You can run the software again which will start when all of the servers are up again.

Mobile access is now enabled for this particular server. Make sure to repeat these steps for each server whose cameras you want available for Mobile viewing.

### c. On NetBSD Units

Upgrade DVR units to 5041g3/5042c3 or above.  
Upgrade DVR units with new HTML 5 remote upgrade file.

### d. On Browser

The core requirement needed to run CatMobile is HTML5. (E.g. the latest Mozilla Firefox.)

#### Firefox

Minimum version 4.0

#### Internet Explorer

Minimum version 9.0

You will need to have the WebM addition installed. If you do not have it, IE will prompt you to do so, and direct you to a download location.

#### Chrome

Minimum version 8.0

### e. On Phone

CatMobile<sup>3</sup> for iPhone, iPad, and iPod touch is available here:



<sup>3</sup> Apple, the Apple logo, iPad, iPhone, and iPod touch are trademarks of Apple Inc., registered in the U.S. and other countries. App Store is a service mark of Apple Inc.

CatMobile<sup>4</sup> for Android is available here:



---

<sup>4</sup> Android is a trademark of Google Inc. Google Play is a trademark of Google Inc.